



PARISH TRANSFORMATION



Queen of Angels
Chicago, Illinois

Parish Overview

Parish History

Founded in 1909 as an English-speaking parish by Irish and second-generation German immigrants wanting to work and pray together, Queen of Angels has been a spiritual and social home for families in the Ravenswood / Lincoln Square area. The parish served as a vital community center during the Great Depression and continues outreach to the poor and marginalized.

Patron Saint

Mary was the mother of Jesus and holds a special place in the hearts of all Catholics. Upon her assumption into heaven, she was crowned as the Queen of Heaven and of all the Angels and Saints. “Queen of Angels” may have been chosen as the particular name because the parish was founded in August 1909 around the time of three Marian feasts: Our Lady of the Angels (August 2), the Assumption of the Blessed Virgin Mary (August 15) and the Queenship of the Blessed Virgin Mary (August 22).

Current Situation

We seek to build on our 100 Years of Sharing and Caring but face hard economic times and a community base that is less Catholic than it was 25 years ago (approximately 35% of residents in Lincoln Square identify as Catholic). Thanks to the grace of God and wise financial decisions, we carry little debt. We rely on fundraising, and increasingly on online giving, to meet operating expenses. Our ministries welcome and serve others without exception and according to their needs, but the average parishioner is largely unaware of all that Queen of Angels has to offer.



Photo by J. Hohner

Parish Ministries - Stewardship

Part 1 of 7

Ministry	Description / Purpose	Who Participates	# of Particip.	Frequency of Meetings	Contact Person
Staff	Pastoral & support staff running programming, doing administrative work and meeting the needs of parishioners.	Pastor; Principal; Business Mgr; Catechetical Leader; Office, Music and Maintenance Staff	15	Exec. staff wkly (Thurs.); Full staff as needed	Pastor Msgr. Jim Kaczorowski
Finance Council	Advisory Board to Pastor; reviews financial data for fiscal responsibility.	Pastor, Business Mgr, Principal, Accts Mgr, Volunteer Members	12	Quarterly	Business Manager Bill Brennan
Parish Transformation	Team of parishioners discerning how to best use our parish's strengths.	Pastor, Principal, Steering Committee, Parishioners	35-40	Wkly (Thurs.) Sept. - Dec.	Pastor Msgr. Jim Kaczorowski
Technology Committee	Tech support, planning and implementation.	School Staff and Skilled Volunteers	5	As needed	Curt Peterson
Fundraising Event Committees	Harvest Jam, Holiday Craft Fair, Winter Toast, Track-a-thon, etc.	Mainly school parent volunteers	~40	As needed	Event Chairpersons
Market Day	Co-op fundraiser selling quality frozen foods.	Volunteer Committee	5	Monthly sale (Sat a.m.)	Nancy Baer

Parish Ministries – *Spiritual Life*

Part 2 of 7

Ministry	Description / Purpose	Who Participates	# of Particip.	Frequency of Meetings	Contact Person
Circulo de Oración	Spanish-language prayer group in the Charismatic tradition. Hold themed retreats 4x year.	Adults and families	~40	Thursdays, some Saturdays (core team or retreats)	Ines Trani
Eucharistic Adoration	Personal prayer opportunity in front of the Blessed Sacrament.	Scheduled adorers	5-10	Fridays	John & Jessica Smith
Estudio de la Biblia	Spanish-language group studying the Bible together.	Members	~12	Fridays	Deacon Ben Nieves
Ministry of Care	Bringing Holy Communion to sick parishioners at home & Swedish Covenant Hospital.	Trained lay ministers	~10	Sundays	Parish Office
Nicodemus Ministry	Leaders of interment prayers who accompany families to the cemetery.	Trained lay ministers	1	As needed	Parish Office
Kairos Retreat	Multi-parish, 4-day retreat for teens in the Ignatian tradition.	Teens in last 3 years of high school	1-5	Annual retreat	Rachel Hohner
Men's Spirituality	Meet to share faith & thoughts; organize adult faith formation opportunities for parish.	Men (core team), adults (events)	5-30	Occasional	Dan Plovovich

Parish Ministries – Liturgical

Part 3 of 7

Ministry	Description / Purpose	Who Participates	# of Particip.	Frequency of Meetings	Contact Person
Extr. Ministers of Holy Communion	Help priest distribute Holy Communion at Masses.	Trained lay ministers	34 Eng. 10 Sp.	Sundays & monthly planning mtgs	Jim Hohner, Antonio Pineda
Lectors and GI Writers	Proclaim Scriptures or read or write the Prayers of the Faithful at Masses.	Trained lay ministers	31 Eng. 12 Sp.	Sundays & monthly planning mtgs	Jim Hohner, Ladime Ramirez
Music Ministry	Cantors, choir members and musicians for Masses.	Auditioned vocalists & instrumentalists	90 Eng. 15 Sp.	Sundays; practice 3x wk	Kent Jager, Maria Valdes-Vargas
Children’s Liturgy of the Word	Proclaim Scriptures and lead reflections/prayers for children at 9:30 Mass.	Trained volunteer catechists serving kids 3-7yo	10	Sundays, Sept - June	Sue Roeser
Altar Servers (Monaguillos)	Assist priest at the altar.	Trained youth	20 Eng. 10 Sp.	Sundays	Mario Caruso, Judith Carrera
Ushers	Welcome people & hand out hymnals at Masses.	Volunteer adults & youth	24 Eng. 8 Sp.	Sundays	Head usher for each weekend Mass
Liturgical Art & Environment Cte.	Decorate the church for the liturgical seasons.	Volunteers	2-5	As needed	Bob & Julie Hess

Parish Ministries – Education

Part 4 of 7

Ministry	Description / Purpose	Who Participates	# of Particip.	Frequency of Meetings	Contact Person
Catholic Elementary School	Total development of children through faith in God, pursuit of academic excellence & social responsibility.	Principal, Teachers, Aides & Office Staff serving kids 2-14yo	56 staff, 427 students *	Faculty mtgs (2 nd Wed)	Principal Julia Kelly
Commons	Home-School organization recognized by the NCEA.	School parents & classrm volunteers	30	Quarterly	Donna Czech
Development Committee	Fundraising, outreach & programming for alumni.	Development Staff, Parent Volunteers	5-10	As needed	Dev. Coord. Kathleen McCarthy
School Board	Advisory board to Pastor & Principal; ambassadors and outreach to families.	Pastor, Principal, elected members	14	Monthly (4 th Monday)	Tad Kolke
Student Council	Peer leadership program for students in the parish school.	Elected student officers & classrm representatives	30	Monthly & as needed	Donald Elkin & Meg Mehan
Green Team & Green Club	Promote ecological responsibility through “green” initiatives.	School parents (Team) & students (Club).	10 parents, 15 kids	Monthly	Scott Grube

* Data incomplete

Parish Ministries – Formation

Part 5 of 7

Ministry	Description / Purpose	Who Participates	# of Particip.	Frequency of Meetings	Contact Person
CCD Program	Watering the seeds planted by God to nourish the faith life of children.	Trained lay catechists serving children not in Catholic schools	10 catechists, 195 students *	Weekly (Sundays), Sept.-May	CRE Rachel Hohner
Communion Preparation	Preparing children & families for First Reconciliation & First Communion.	Children in school (2 nd grade) & CCD (several levels)	6 catechists, ~95 children	Each regular Religion or CCD class	CRE Rachel Hohner
Confirmation Preparation	Preparing youth, families and Sponsors for Confirmation.	Youth in school (8 th grade) & CCD alumni	5 catechists, ~40 youth	Weekly (Mondays), Sept.-Feb.	CRE Rachel Hohner
RCIA	Sacramental preparation for adults who are uncatechized or becoming Catholic.	Adults from St. Matthias, OLL & Q of A parishes.	2 catechists, ~15 adults	Weekly (Tuesdays), Oct.-Apr.	Dan Plovanich
Baptism Prep	Preparing parents and godparents to raise children in the Catholic faith.	Trained volunteer catechists, parents & Sponsors	7 catechists, ~200 families	Monthly (1 st Tuesday)	Patrick Johnson & Jennifer Payne
SPRED	3 groups of Special Religious Development for adults with developmental disabilities.	Trained lay catechists serving disabled adults	23 catechists, 16 friends w/ disabilities	Weekly (Tues., Wed., Thurs.), Sept.-May	Julie Hess

* Data incomplete

Parish Ministries – Human Concerns Part 6 of 7

Ministry	Description / Purpose	Who Participates	# of Particip.	Frequency of Meetings	Contact Person
Anklebiters	Play group network for parents & caregivers of small children.	Children 6 months to 3yo & caregivers	20	Weekly (Monday a.m.)	Principal Julia Kelly
Society of St. Vincent de Paul	Provide emergency financial assistance and organize item drives.	Adult conference serving families in need.	12	Monthly (2 nd Thursday)	Roine Dryer-Michaels
Respect Life Committee	Promote a Culture of Life. Raise awareness and organize drives/fundraisers.	Adult members	15	As needed	Patti Corbitt
Anonymous Groups	Provide space for Alcoholics Anonymous & Overeaters Anonymous groups.	Adults	60	Weekly (Mon. & Tues.)	Nancy Baer
SVDP Youth Group	Serve those in need while growing in faith and friendship.	Teens in high school	~20	Monthly	Rachel Hohner
Commons Community Service Team	Organize age-appropriate service projects for children and families.	Mainly school parents & families	15	Mnthly events; Mtgs as needed	Donna Czech

Parish Ministries – Fellowship

Part 7 of 7

Ministry	Description / Purpose	Who Participates	# of Particip.	Frequency of Meetings	Contact Person
Cub Scouts	Helping younger boys develop morality, skills and interests.	Boys in 1 st -5 th grades	80	Dens every 2 wks, Pack monthly (4 th Friday)	Lyzette Austen
Boy Scouts	Helping older boys develop morality, leadership and life skills.	Boys in 6 th -12 th grades	20	Weekly (Tuesdays)	Drake Winters
Girl Scouts	Helping girls develop morality, leadership and life skills.	Girls in 1 st -12 th grades	60	Every 2 weeks (Wed. or Thurs.); Leaders monthly (1 st Thursday)	Ann Ryan
Ravenswood Catholic Young Adults (RCYA)	Multi-parish group sharing faith and fellowship. Sponsor sports leagues & faith discussion groups.	Young adults in 20s & 30s, both single and married	40+	Monthly social; Weekly seasonal events	Jaimee Stephens
Men's Club	Social, service and sports organization for men of the parish.	Men, mainly fathers of school students or alumni	30	Weekly basketball (Thurs.); Monthly mtg (2 nd Thursday)	Mike Witchger

Parish Key Trends

I. Weekly Mass Attendance (October Count)

2008-9	1,132
2009-10	1,143
2010-11	1,108
2011-12	1,035
2012-13	1,062

II. Registered Families

2008-9	1,243
2009-10	1,255
2010-11	1,299
2011-12	1,373
2012-13	1,380

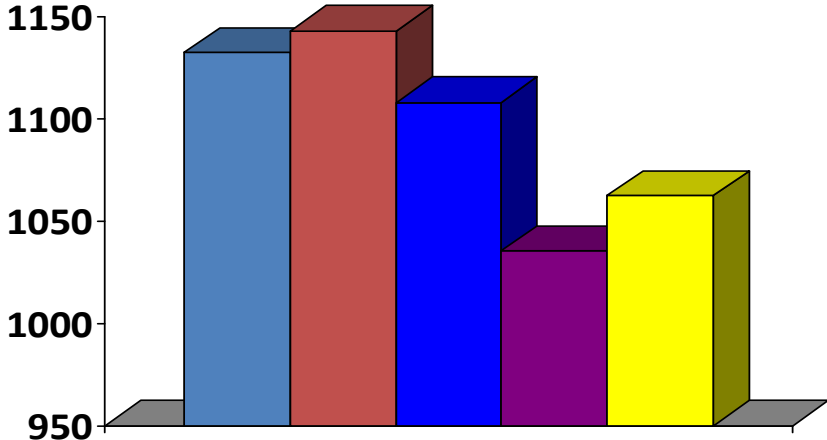
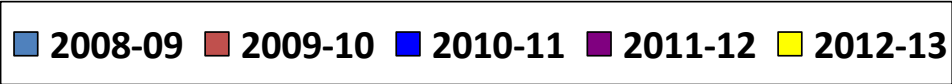
III. School Enrollment

2008-9	286
2009-10	258
2010-11	266
2011-12	418
2012-13	430

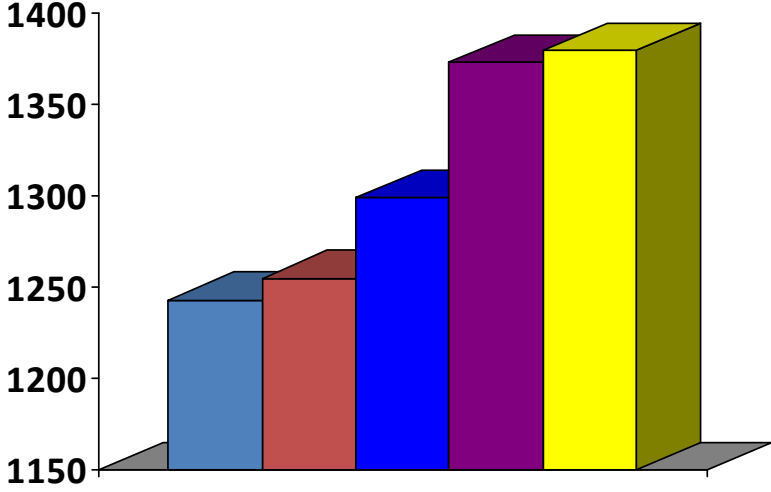
IV. Baptisms – Infants & Adults

2008-9	170
2009-10	202
2010-11	220
2011-12	223
2012-13	232

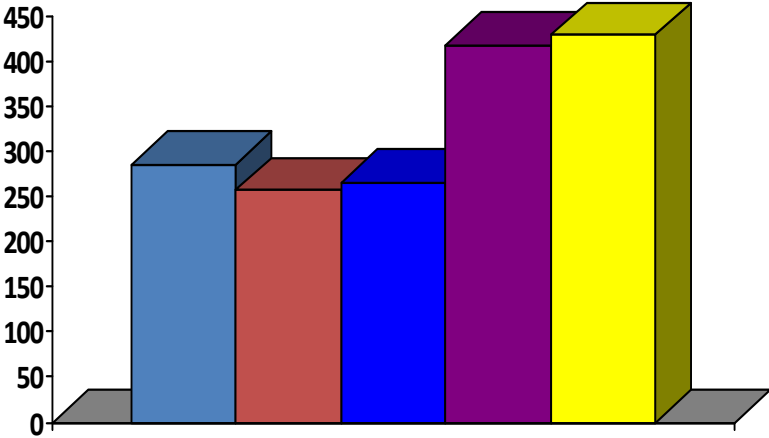
Parish Key Trends



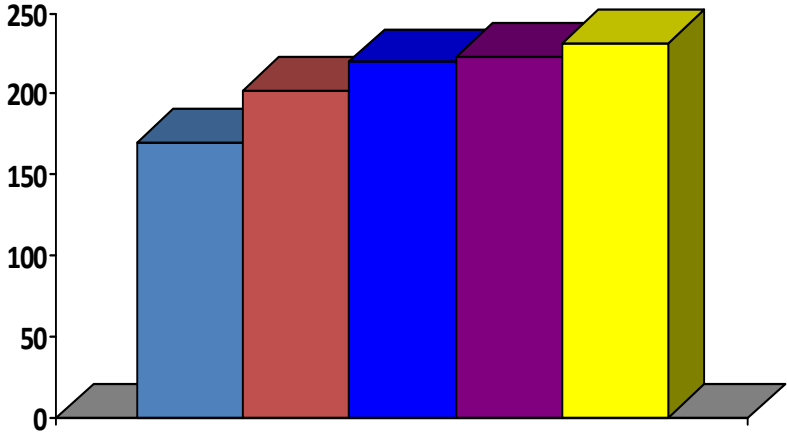
I. Weekly Mass Attendance



II. Registered Families



III. School Enrollment



IV. Baptisms - Infants & Adults

Parish Key Trends

I. Weddings *

2008-9	22
2009-10	15
2010-11	16
2011-12	25
2012-13	27

II. Funerals

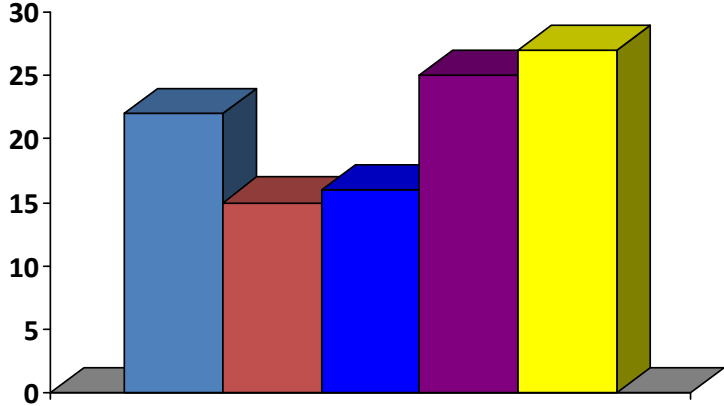
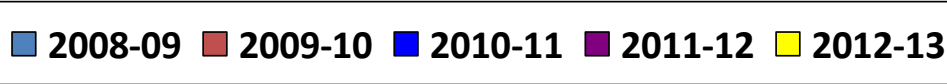
2008-9	29
2009-10	32
2010-11	27
2011-12	22
2012-13	30

** Add'l weddings prepared here but celebrated out-of-state.*

Demographics from U.S. Census Data, 2000-2018

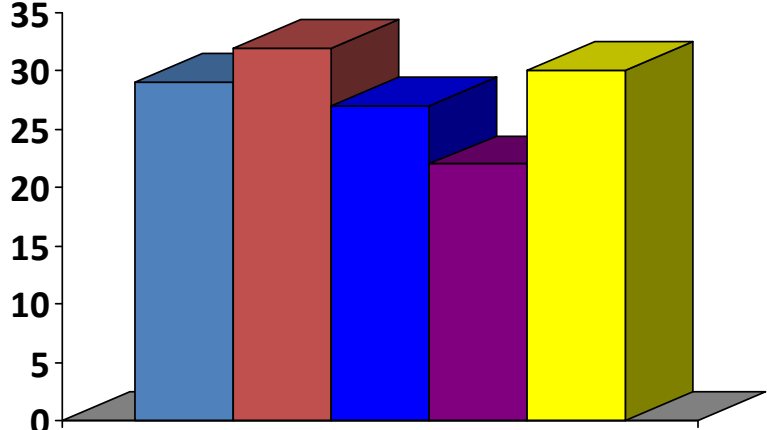
	Census 2000		Census 2010		Change, 2000-2010		2018 Projection
	#	%	#	%	#	%	#
Hispanic, All Races	4,068	23.80%	2,461	15.17%	- 1,607	- 39.50%	1,883
White, Non-Hispanic	11,028	64.50%	12,032	74.17%	+ 1,004	+ 9.10%	13,085
Black, Non-Hispanic	418	2.44%	402	2.48%	- 16	- 3.83%	364
Asian, Non-Hispanic	1,054	6.16%	928	5.72%	- 126	+ 11.95%	836
Other	530	3.10%	400	2.47%	- 130	- 24.53%	321
Total Population	17,098	100.0%	16,223	100.00%	- 875	- 5.12%	16,489

Parish Key Trends



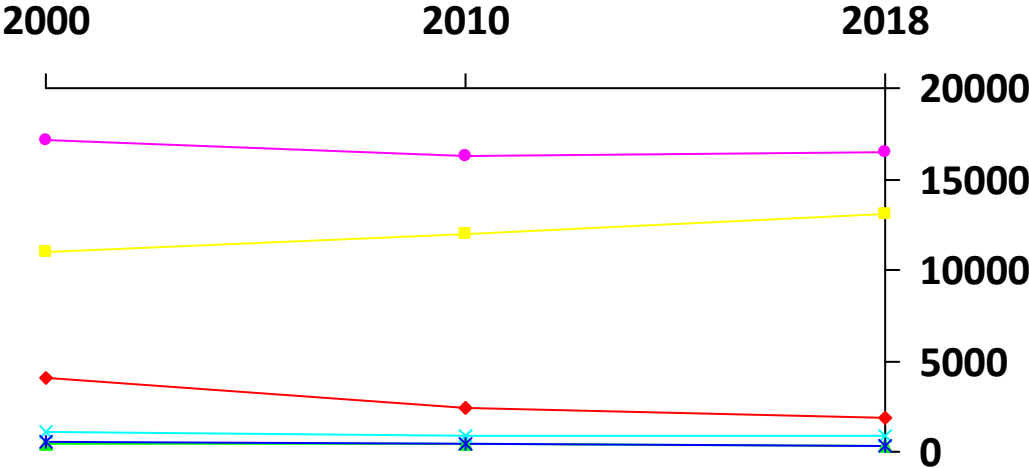
V. Weddings *

* Add'l weddings prepared here but celebrated out-of-state.

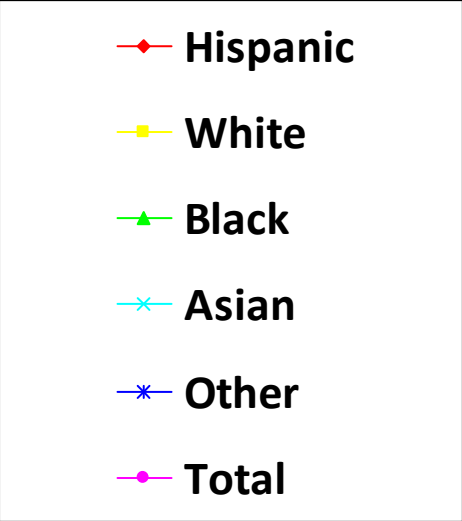


VI. Funerals

Neighborhood Demographics from U.S. Census Data, 2000-2018



Data Sources: U.S. Census and Nielsen, Inc.



Parish Demographics

The demographic study provides a basic overview of the geographic area within the pastoral boundaries of Queen of Angels Parish in Chicago, Illinois. We assume parish boundaries as follows:

East: **Damen Ave.** West: **North Branch of the Chicago River**
 North: **Lawrence Ave.** South: **Irving Park Ave.**

Map Source: Google Maps

Age	2000	2010	2018	2000-2018	
	Census	Census	Projection	Number	Percent
Under 5	924	1,192	1,042	+118	+ 12.77%
5-9	760	721	1,093	+333	+ 43.82%
10-14	695	440	918	+223	+ 32.09%
15-17	480	260	346	-134	- 27.92%
18-24	1,529	996	606	-923	- 60.37%
25-34	4,317	4,694	3,417	-900	- 20.85%
35-44	3,154	3,162	3,439	+285	+ 9.04%
45-64	3,526	3,277	3,898	+372	+ 10.55%
65+	1,713	1,481	1,730	+17	+ 0.99%



Race	Data Sources: U.S. Census and Nielsen, Inc.				
	2000	2010	2018	2000-2018	
	Census	Census	Projection	Number	Percent
Hispanic, All Races	4,068	2,461	1,883	- 2,185	- 53.71%
White, Non-Hispanic	11,028	12,032	13,085	+ 2,057	+ 18.65%
Black, Non-Hispanic	418	402	364	- 54	- 12.92%
Asian, Non-Hispanic	1,054	928	836	- 218	- 20.68%
Other/2 or more races, Non-Hispanic	530	400	321	- 209	- 39.43%
Total	17,098	16,223	16,489	- 609	- 3.56%

Summary Financials

Church Financial Data ¹

	Actual	Pct. Oper. Revenue	Per Member ²
Regular Collections	\$ 482,360	73.9 %	\$ 124
Fundraising	\$ 63,070	9.6 %	\$ 16
Other Revenues	\$ 107,703	16.5 %	\$ 28
Total Oper. Revenue	\$ 653,133	100.0 %	\$ 168
Salaries & Benefits	\$ 384,731	59.0 %	\$ 99
Other Expenses ³	\$ 347,962	53.2 %	\$ 89
Total Oper. Expenses	\$ 732,693	112.2 %	\$ 188
Net Extraord. Revenue ⁴	\$ 62,035	9.5 %	\$ 16
Church Surplus/Deficit (\$ 17,525)		2.7 %	\$ 4

[1] Data for 2012-2013

[2] Based on 3900 parishioners.

[3] Include Archdiocesan Assessment, Maintenance & Building Repairs, and Property Insurance.

[4] Include Archdiocesan Collections, Bequests, Insurance Recoveries and Annual Catholic Appeal Rebate.

Summary Financials

School Financial Data ¹

	Actual	Pct. Revenue	Per Student ²
Tuition & Fees	\$ 2,449,294	89.1 %	\$ 5,736
Fundraising & Gov't Aid	\$ 242,259	8.8 %	\$ 567
Other Revenues	\$ 58,267	2.1 %	\$ 136
Total Revenue	\$ 2,750,220	100.0 %	\$ 6,441
Salaries & Benefits	\$ 1,944,062	70.7 %	\$ 4,553
Other Expenses ³	\$ 644,828	23.4 %	\$ 1,510
Total Expenses	\$ 2,588,890	94.1 %	\$ 6,063
School Surplus/Deficit ⁴	\$ 161,330	5.9 %	\$ 378

PARISH NET \$ 143,790 (*Church & School*)

[1] Data for 2012-2013

[2] Based on 427 students.

[3] Other expenses include Archdiocesan Assessment, Maintenance & Building Repairs, Property Insurance and Capital Items.

[4] As of June 30, 2013, prior to summer 2013 payroll & related expenses for school & camp.

Mission Statement: *Queen of Angels is a Christian Community joined in one Catholic Faith and nourished by the same sacramental life. We celebrate the diversity of our people united through our spiritual life, sharing of faith and knowledge, enjoyment of one another, the concern for human needs and the stewardship of all we have. We undertake this challenge as Disciples of Jesus guided by His word and strengthened by His love.*